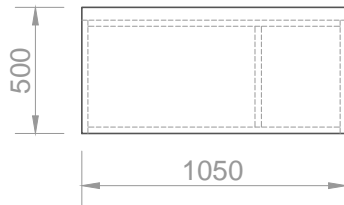
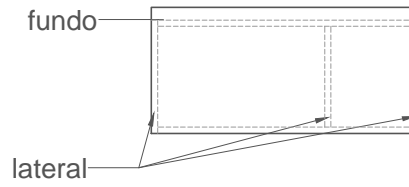


# A2-B

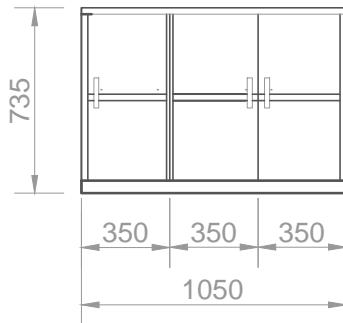
planta



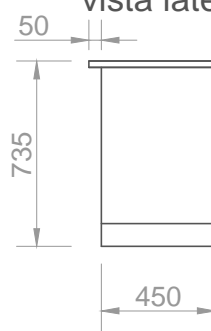
planta



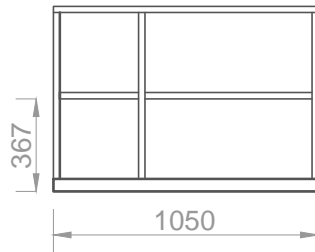
vista frontal



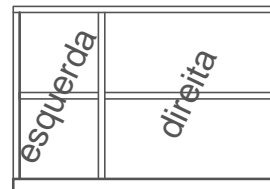
vista lateral



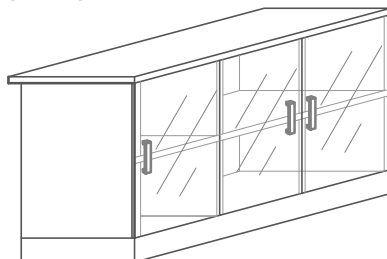
vista frontal interna



vista frontal interna



perspectiva



TRIBUNAL DE CONTAS DO ESTADO DE SÃO PAULO

ASSUNTO  
GABINETE CONSELHEIRO ROQUE CITADINI

A2-B - ARMÁRIO 2 B